



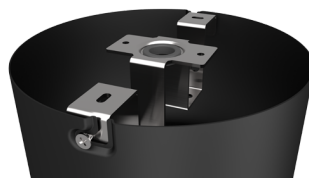
**Application** Ancillary, Commercial, Education, Healthcare, Hospitality

**Specification** Performance

# Comfort EVO Surface Mounted

Comfort EVO 1 Surface Mounted Black

**Code:** ACOM1/1/SMF/B



## PRODUCT FEATURES

- Economic high performance CCT selectable surface IP44 downlight suitable for commercial and healthcare applications
- CCT selectable between 3000K and 4000K and power selectable; offering a choice of 2 outputs, in one luminaire
- Polycarbonate housing with unique thermal management for durability and optimum lifespan
- Please note: Reflector and trim parts (ACOM/TR/\*/\*) are not required for installation with this kit
- Deep cut-off angle for glare control and comfort
- Available in black or white finishes
- Dimmable options available
- Please note: Hawk Emergency Kit cannot be used in conjunction with this downlight

### GENERAL INFORMATION

<b>Wattage</b>	7W - 13W
<b>Lumens Delivered</b>	1000lm - 1800lm (4000K)
<b>Lm/W</b>	130lm/W (4000K)
<b>Beam Angle</b>	80
<b>CRI</b>	80
<b>CCT</b>	3000K/4000K
<b>Input</b>	220/240V
<b>Operating Temp</b>	-20°C - 25°C
<b>SDCM</b>	3
<b>UGR</b>	23
<b>Energy efficiency class</b>	F
<b>Product Weight without Packaging</b>	0.37 kg

### TECHNICAL INFORMATION

<b>Light Source</b>	LED
<b>Colour / Finish</b>	Black
<b>IP Rating</b>	IP44
<b>Class Protection</b>	2
<b>Internal / External</b>	Internal
<b>Surface / Recessed / Suspended</b>	Surface
<b>Lumen Depreciation</b>	L80 B10 60,000h
<b>Warranty (Years)</b>	5
<b>CE Mark</b>	Yes
<b>Diameter</b>	180 mm
<b>Height</b>	135 mm





<b>Application</b>	Ancillary, Commercial, Education, Healthcare, Hospitality
<b>Specification</b>	Performance

# Comfort EVO Surface Mounted

Comfort EVO 1 Surface Mounted Black  
Code: ACOM1/1/SMF/B

